



Western  
University  
OF HEALTH SCIENCES

---

## College of Podiatric Medicine

**As humans, we were made to move. With purpose.  
With Speed. With Grace. And without pain.**

---

As a podiatric physician, you will learn to practice the medicine of movement.

You will apply your passion for medicine. For learning. For healing. You will be able to recognize illness in any part of the human body.

You will build compassion, expertise and skill in treating the whole person, quite literally from the ground up.

You will be given more advantages, assistance and opportunities to work in your specialty - and in less time than you thought possible.

You will learn the comforting manner, cool head and steady hand of a trusted medical partner, in the profession and in your patient's lives.

With a foundation like this, soon you, your career and your patients can begin moving to a stronger future.

---

**FIND YOUR FOUNDATION WITH  
WESTERNU COLLEGE OF PODIATRIC MEDICINE**



# Contents

4	Welcome to the College of Podiatric Medicine
6	The Interview Process
9	Curriculum
12	The Facilities
13	Financial Aid
16	We Care About You!
17	Student Life
17	Your Well-Being
18	Educational Support
19	Personal Competencies for Admission and Matriculation
21	Housing and Transportation
22	What our Students Say
23	Contacts

Western University of Health Sciences College of Podiatric Medicine's progressive and comprehensive medical education is leading the way in inspiring and preparing a new generation of podiatric physicians whose expertise and compassionate care for the whole person improves lives.



# Welcome to the College of Podiatric Medicine



Welcome to the WesternU campus for your interview day. Thank you for your interest in pursuing your dream to become a podiatric physician and surgeon by training at WesternU CPM, the newest, cutting-edge college. I want to make sure that you get everything out of this day that you want, whether it is touring the clinics, talking with students or getting to know one of your future faculty members a little better. So speak up and let us know if there is something that you want to experience while you are here that you have not already seen.

At the end of your day I want you to have experienced what is unique about our College and there are many things that make it a special place to learn.

**Educational Technology:** Virtual reality training, the Digital Doctor's Bag®

**Early Entry Clinical Training:** Starting in your first semester you work with standardized patients in clinical settings to develop your skills.

**Embedded Education:** If you are going to have the privilege of treating and operating on patients, our philosophy is that you should be a physician first and a specialist next. Therefore you learn alongside your DO colleagues, developing respect for yourself and the profession as the interprofessional team realizes you studied the same material they did. You create lifelong friendships among the other healthcare providers.

**Residency Placement:** CPM has the highest residency placement in the country! 100% of grads are placed year after year.

As you walk down the beautiful Southern California esplanade that houses our campus and meet our students and faculty, you too will understand why WesternU is a family! Won't you join us?

A handwritten signature in black ink that reads "V. Kathleen Satterfield, DPM". The signature is fluid and cursive.

V. Kathleen Satterfield, DPM, FACFAOM  
Dean and Professor,  
College of Podiatric Medicine



## AN INSTITUTION WITH A HEART

There is a science to modern medicine and an art to compassionate healing. Here, we teach and practice both to not only treat the whole patient but to build stronger relationships with them and the communities we serve.

HUMANISM

CARING

# THE INTERVIEW PROCESS

## Welcome

Meet with our faculty, administration and other WesternU representatives.

## Interview

Meet with a faculty member one-on-one. While naturally stressful, the goal is to get to know you and what kind of doctor you will be.

## Campus Tour

See the WesternU campus, which is made up of the nine distinct colleges which you will collaborate with during your interprofessional educational experiences. You will also see technology driven classrooms and study rooms, and the WesternU Health Pomona patient care facility which is home to the Foot & Ankle Center, among others.

## Admissions Committee

Following the interview day, the Admissions Committee will place you in one of four categories.

### Admit

- Send any final official transcripts. You must have > "C" in all prerequisite courses.
- You will need to submit a deposit and health clearance documentation.
- Non-US Citizens will need to submit proof of residency.

### Alternate

- Acknowledge alternate status to remain in consideration.
- You may receive offers of admission as late as August.
- Admission is not guaranteed.

### Hold

- Call the Office of Admissions with any questions.

### Denied

- Schedule an advising appointment to discuss your application and how to improve your candidacy should you choose to reapply.  
[apply.westernu.edu/portal/advising-cpm](http://apply.westernu.edu/portal/advising-cpm)

## DEPOSIT DEADLINES

Admitted by	Deposit due
January 31	within 30 days of offer of admission
February 1 – May 31	within 14 days of offer of admission
After May 31	may require immediate deposit

**Health clearance documents, final official transcripts and criminal background checks are due by June 1.**

*\* If attending the Intensive Summer Anatomy Course (ISAC) then all documents are due May 1st.*



---

**"Most institutions offer students 3-4 months total of clinical externships; our students start earlier and get more before residency interviews."**

**Jacqueline Truong, DPM**  
Assistant Dean,  
Pre-Clinical Curriculum and Faculty Affairs

---



**100%**

Residency Placement  
Classes of 2014-2018

---

**ELEVATING**  
the lives of our students.

---

**ELEVATING**  
the lives of their patients.

---

**ELEVATING**  
the profession of podiatry itself.

---

**100%**

Pass rate on Boards Part II  
& Clinical Skills Exam

**100%**

High-quality educational  
experience from the Class  
of 2013 alumni survey





“Here the clinical and academic environments cross, which makes the experience more relevant.”

*Jonathan Labovitz, DPM  
Associate Dean,  
Clinical Education and  
Graduate Services*



“WesternU CPM provided the best well rounded training in medicine and surgery. Excellent medical and podiatric training.”

*Alumni, Class of 2013*

# CURRICULUM

Our innovative curriculum is based on the latest literature to support adult learning, optimize multiple educational methods and retention to maximize your success and benefit your patients' well-being.

## Overview

Your first two years focus on the foundations of medicine in classroom and small group activities, hands-on workshops and standardized patients. Your third and fourth years are spent on clinical rotations learning to care for patients first hand.

## Pre-Clinical Education

**1st year focus:** Normal functions of body, health and wellness.

**2nd year focus:** Restoration of health, diagnosis and treatment.

We present the material in integrated blocks of the sciences and clinical skills. You also have podiatric specific courses and a two-year comprehensive course to help you prepare for the boards.

## Clinical Education

In your third year you complete clinical rotations in medicine, surgery and podiatric medicine, surgery & biomechanics at core LA area hospitals. You will also have a weekly didactic and skills session.

Starting the last two months of third year you extern at residency programs around the country.



## Interprofessional Education

Students from our nine graduate/professional colleges work together in classrooms, small venues and with patients to develop an understanding of other healthcare professions and provide a team-based approach to patient care.

The National Academy of Medicine and national healthcare organizations emphasize collaborative care, making this an essential component of training future health care professionals.



## Summer Programs

### Summer Preparedness and Readiness Course (SPaRC)

- 5 week student-centered and student-driven program
- Designed to prepare incoming students for the rigor of their program
- Introduces coursework, skills and competencies in an interprofessional environment.

### Intensive Summer Anatomy Course (ISAC)

- Fast paced 6 week course
- Covers the gross anatomy course except for the Head & Neck portion
- Early exposure and improved faculty to student ratio
- If your final grade is 80 or above you may be asked to facilitate the course during the academic year

**“Interprofessional education occurs when students from two or more professions learn about, from and with each other to enable effective collaboration and improve health.”**

*World Health Organization (2010)*



**“Interprofessional education teaches us to work as a team and understand what other specialties do - ultimately we learn how to provide better care.”**

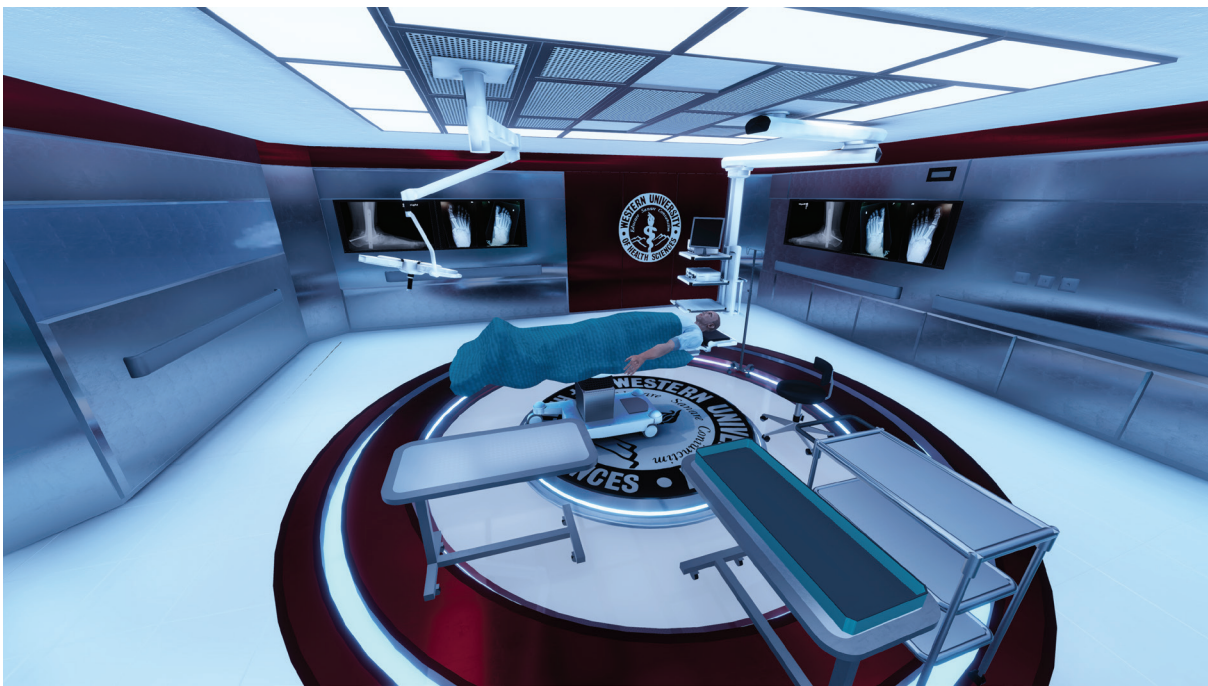
*Student, Class of 2019*

# What sets CPM apart?

# INNOVATION

CPM's comprehensive and progressive medical curriculum integrates the foundational biomedical sciences by organ system. We also use multiple methods of conveying information, from lectures and case-based learning to hands-on and interprofessional experiences.

While we specialize in the lower extremity, our graduates function extraordinarily effectively in all aspects of medicine, making them an invaluable part of the patient care team.



## What's next?

We are developing interactive tools to leverage the latest educational technology, including a virtual operating room and 3-D printed lower extremity models.



# THE FACILITIES

## Health Education Center

Most of your classes will be in this 4-story, 180,000 sq. ft. building that houses 6 auditoriums, more than 50 meeting rooms, faculty offices and college administration.

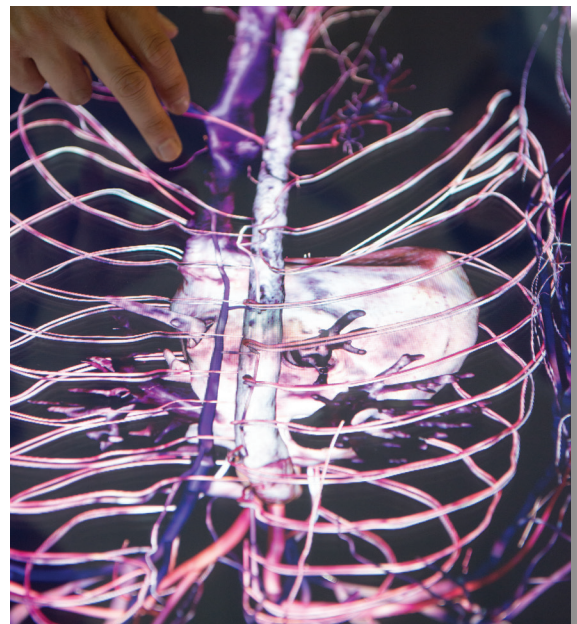


## WesternU Health | Pomona Patient Care Center

The patient care center on the Pomona campus is home to the Foot & Ankle Center and the Limb Preservation Center, including cutting edge diagnostic technology for x-rays, gait analysis and vascular testing.

## The J and K Virtual Reality Center

Designed to broaden your understanding and retention of anatomy and anatomical functions using the Anatomage Virtual Dissection table as well as other advanced educational technology.



# FINANCIAL AID

## Financing a Healthy Future

We believe it is critical to help support you as you finance the foundation of your career. The Financial Aid Office developed the Financing a Healthy Future literacy program site to help our students make better-informed decisions and provide you with the tools needed for financial planning, counseling and budgeting. You can use these tools in your student, work and personal life. For more information please visit [financial-literacy.westernu.edu/](http://financial-literacy.westernu.edu/).

**Financial Aid Links**

- [About Financial Aid](#)
- [Code of Conduct](#)
- [Student Consumer Information](#)
- [Overview of WesternU Financial Aid Process](#)
- [Financial Literacy](#)
- [Student Budgets](#)
- [Disbursement Information](#)
- [Financial Aid Student SharePoint Forms Online](#)
- [Tuition Refund Policy](#)
- [Contact](#)
- [Counseling](#)
- [Entrance Loan Counseling Requirement](#)

**Attention WesternU Students**

Orientation Week

Orientation week begins July 29th for Lebanon students and August 5th for Pomona students! Have you completed all of your financial aid requirements?

To check please go to the [Student YOU Portal](#) and follow these instructions:

1. Select **"Quick Links"** from the menu on the left
2. Select **"Student Finance"**
3. Then click on **"Financial Aid Outstanding Requirements"** link

The Financial Aid Office would like to welcome all of our new entering students to Western University of Health Sciences.

Congratulations !

**Go to WHAT'S NEW for more Information**

**WesternU Events**

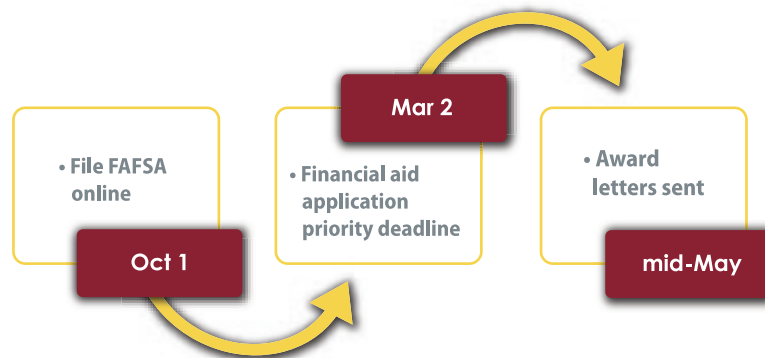
Aug. 21	<a href="#">APHA MEMBERSHIP TABLING</a> 12:00 pm
Aug. 21	<a href="#">VBMA DECHRA EVENT</a> 5:15 pm
Aug.	<a href="#">APHA MEMBERSHIP TABLING</a>

## NEED ASSISTANCE?

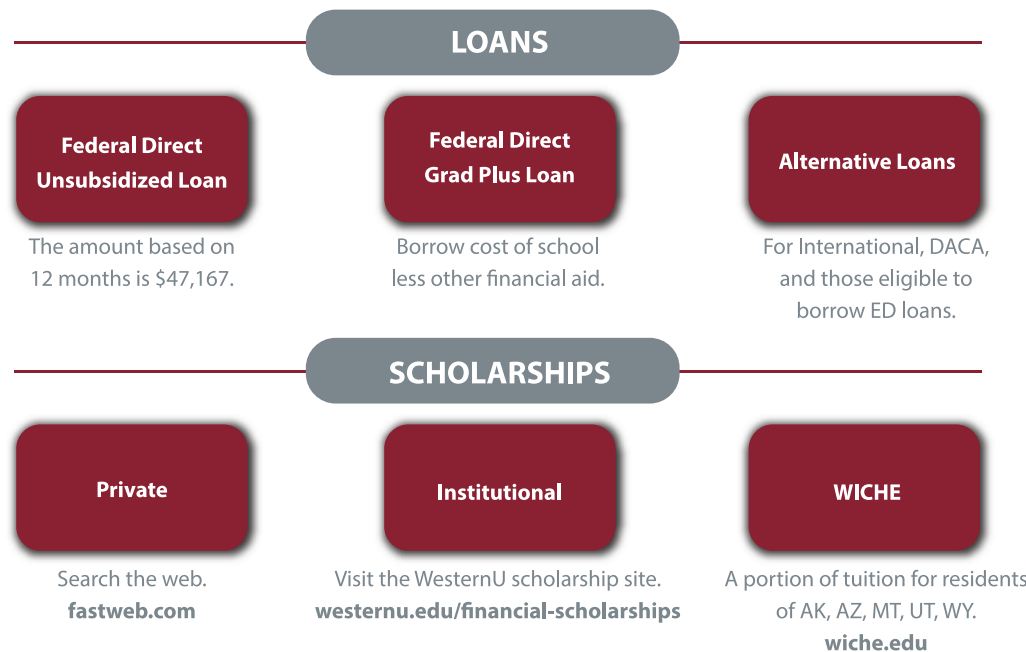
For additional information on Financial Aid visit [westernu.edu](http://westernu.edu) or call 800-346-1610

## Applying for Aid

- You **must** complete the FAFSA form
- The WesternU school code is 024827
- File online at [fafsa.ed.gov](http://fafsa.ed.gov)



Graduate professional students are eligible to borrow federal loans up to the cost of attendance minus other financial aid from the Department of Education (ED) and/or non-Department of Education lenders referred to as an Alternate loan. Repayment begins six months after the student graduates or drops below half-time enrollment. Limited deferments and forbearances are available to students upon graduation based on economic hardship.



International and DACA students may be eligible for alternative loans, which require a credit check and a U.S. citizen co-signer.

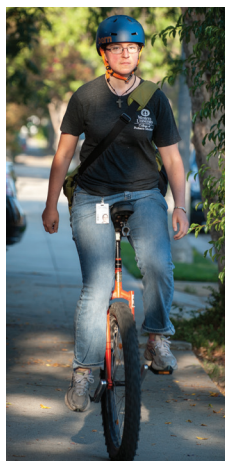
Alternative loans have no interest rate cap and approval is not guaranteed.

**Live Financial Aid webinars designed specifically for interviewees.**  
[apply.westernu.edu/portal/finaid-interview](http://apply.westernu.edu/portal/finaid-interview)

## Financial Aid Student Budgets are Subject to Change

- Information is updated annually at the end of April.
- Please visit [www.westernu.edu/financial/financial-budgets/](http://www.westernu.edu/financial/financial-budgets/) for details.

2019/2020 Doctor of Podiatric Medicine	First Year 10 Months	Second Year 10 Months	Third Year 12 Months	Fourth Year 12 Months	Podiatry ISAC 12 Months
<b>Tuition &amp; Fees</b>					
Tuition	\$39,820	\$39,820	\$39,820	\$39,820	\$39,820
Student Body Fees	\$40	\$40	\$20	\$20	\$40
Graduation Fees	N/A	N/A	N/A	\$350	N/A
<b>Total Fees</b>	<b>\$39,860</b>	<b>\$39,860</b>	<b>\$39,840</b>	<b>\$40,190</b>	<b>\$39,860</b>
<b>Budget Items/Estimated Costs</b>					
Books & Supplies	\$2,386	\$1,245	\$0	\$0	\$2,386
Living Expenses (R&B/Personal)	\$18,220	\$18,220	\$21,864	\$21,864	\$21,864
Transportation	\$3,118	\$3,045	\$9,048	\$8,526	\$3,698
Boards – APMLE Part I	N/A	N/A	\$925	N/A	N/A
Boards – APMLE Part II	N/A	N/A	N/A	\$925	N/A
CPSE Exam Part II	N/A	N/A	N/A	\$1,230	N/A
CPSE Travel	N/A	N/A	N/A	\$879	N/A
Limit License	N/A	N/A	N/A	\$131	N/A
Background Check/Drug Screening	\$100	N/A	\$100	\$100	\$100
Membership Dues	\$75	\$100	\$100	\$180	\$75
CASPR Application Fees	N/A	N/A	N/A	\$350	N/A
CRIP – Centralized Residency Interview Program/Travel	N/A	N/A	N/A	\$1,100	N/A
CPR	N/A	N/A	N/A	\$90.00	N/A
<b>Total Budget Components</b>	<b>\$23,899</b>	<b>\$22,610</b>	<b>\$32,037</b>	<b>\$35,375</b>	<b>\$28,123</b>
<b>Loan Fees</b>					
Direct Stafford Unsubsidized Loan Fees	\$454	\$454	\$501	\$501	\$501
Grad PLUS Loan Fees	\$913	\$858	\$1,071	\$1,228	\$906
<b>Total Loan Fees</b>	<b>\$1,367</b>	<b>\$1,312</b>	<b>\$1,572</b>	<b>\$1,729</b>	<b>\$1,407</b>
<b>Total Budget</b>	<b>\$65,126</b>	<b>\$63,782</b>	<b>\$73,449</b>	<b>\$77,294</b>	<b>\$69,390</b>



# WE CARE ABOUT YOU!



**Student Life**  
**Your Well-Being**  
**Educational Support**

At WesternU you will learn the foundation to elevating the lives of your patients. ***Together we will elevate the field of podiatric medicine.***

It begins with elevating the lives of our students through positive experiences in Student Life, Your Well-Being, and Educational Support.



# STUDENT LIFE

We hold student events as a college and with The College of Osteopathic Medicine of the Pacific to celebrate your diligence and hard work during the year.

WesternU has an active student government and over 130 student clubs that highlight our diverse student body.

[westernu.edu/students/students-government/](http://westernu.edu/students/students-government/)  
[westernu.edu/students/westernu-clubs-1/](http://westernu.edu/students/westernu-clubs-1/)

WesternU offers fitness membership discounts.

[westernu.edu/students/students-services-fitness/](http://westernu.edu/students/students-services-fitness/)



## YOUR WELL-BEING

### Harris Family Center for Disability and Health Policy

If you have a medical condition or disability that requires support services, including academic accommodations, the Harris Family Center will work with you.

### Health Insurance

WesternU offers a student health plan. For more information see [www.westernu.edu/registrar/registrar-about/student-health-insurance/](http://www.westernu.edu/registrar/registrar-about/student-health-insurance/)

### Counseling

Full-time students have access to an Employee Assistance Program for Students through Optum Health. We also have a counselor on campus and the Dean and your faculty advisor provide counseling.

### Well-Being Initiative

Workshops focusing on student wellness around exams, weekly meditation and other activities to enrich the humanistic side of the student experience.

# COLLABORATIVE

## Educational Support Learning Enhancement and Academic Development (LEAD)

LEAD counselors are experts dedicated to assisting students to develop their academic, professional and personal skills. They serve as a partner through academic counseling, learning style assessment, tutoring services and many workshops on various topics to promote your academic success. Specifically for CPM, the LEAD office has developed programs to enable students to accomplish their goals and achieve greater academic success starting early in the first academic year.

The Best Foot Forward program. The LEAD office designed this program specifically for CPM students experiencing challenges with the pre-clinical curriculum. It has been shown to be statistically significant in raising struggling students' scores and narrowing the achievement gap with excelling CPM students.



CHALLENGING



**“I** enjoy watching the transformation from first-year student to capable podiatric physician and getting to be a small part of that journey.”

*Hector Arroyo, Jr. Ed.D.  
Associate Director, LEAD*

REWARDING

# PERSONAL COMPETENCIES FOR ADMISSION AND MATRICULATION

A candidate for admission to the Doctor of Podiatric Medicine (DPM) program must possess, or be able to achieve through a reasonable accommodation, certain sensory and motor functions, that would enable him/her to carry out the activities described below. Upon matriculation to the program, the student must continue to possess, or be able to achieve through a reasonable accommodation, the personal competencies outlined below throughout their progression in Doctor of Podiatric Medicine (DPM) program. Graduation from the program signifies that the individual is prepared for entry-level podiatric medicine and surgery postgraduate training programs. It follows that graduates must have the knowledge and skills needed to function in a broad variety of clinical situations (medical and surgical) and to render comprehensive general medical and surgical care as well as podiatric medical and surgical patient care. The podiatric medical student must be able to integrate, consistently and accurately, all information received by all available means necessary. In addition, he/she must have the intellectual ability to learn, integrate, analyze, synthesize, and apply various types of information in a self-directed manner within the context of patient care.

A candidate for the DPM degree must exhibit abilities and skills, which include but are not limited to the six areas identified below. For candidates or students who require a reasonable accommodation in order to meet the competencies outlined below, please contact the Harris Family Center for Disability and Health Policy/Accommodation and Resource Center (CDHP/AARC) at (909) 469-5297.

Under all circumstances, a candidate or student should be able to perform the following in a reasonably independent manner, with or without a reasonable accommodation:

## Observation

Candidates and students must have sufficient vision to be able to observe demonstrations, experiments, and microscopic laboratory exercises. They must be able to observe a patient accurately at a distance and close at hand.

## Communication

Candidates and students must be able to communicate with patients and colleagues. They should be able to hear with or without reasonable accommodations. Candidates and students must be able to read, hear, speak, and be fluent in the English language. Reasonable accommodations may be provided for the hearing and speaking impaired.

## Motor

Candidates and students must have sufficient motor functions to enable them to execute movements (with or without reasonable accommodations) that are reasonably required to provide general and emergency treatment of patients (i.e., palpation, auscultation, percussion, and other diagnostic and therapeutic modalities). Examples of procedures reasonably required of students and podiatric physicians include, but are not limited to: physical examination in the acute and non-acute settings, cardiopulmonary resuscitation, insertion of a variety of catheters, administration of intravenous medication, application of pressure to stop bleeding, opening of obstructed airways, suturing of simple wounds, closed manipulation of lower extremity fractures, and intra-operative (open reduction with internal or external fixation-ORIF/OREF) of fractures. These actions require coordination of both gross and fine muscular movements, equilibrium and functional use of the senses of touch and vision.

## Intellectual, Conceptual, Integrative, and Quantitative Abilities

Candidates and students must demonstrate problem-solving skills, which involve intellectual, conceptual, integrative, and quantitative abilities. These abilities include memory, measurement, calculation, reasoning, analysis, and synthesis. The critical intellectual skill demanded of a podiatric physician, requires all of these intellectual abilities. In addition, candidates and students should be able to comprehend three-dimensional relationships and understand the spatial relationships of structures.

## Behavioral and Social Attributes

Candidates and students must possess the emotional health required for full utilization of the intellectual abilities. They must show evidence that they can exercise good judgment and prompt completion of all responsibilities attendant to the assessment and care of patients. Candidates and students must also demonstrate that they can develop mature, sensitive, and effective relationships with faculty, staff, colleagues, and patients. Candidates and students must be able to tolerate physically taxing workloads, adapt to changing environments, display flexibility, and learn to function in the face of uncertainties inherent in patient care. Compassion, integrity, concern for others, interpersonal skills, interest, and motivation are all personal qualities to be assessed during the admissions and educational processes.

## Physical Health

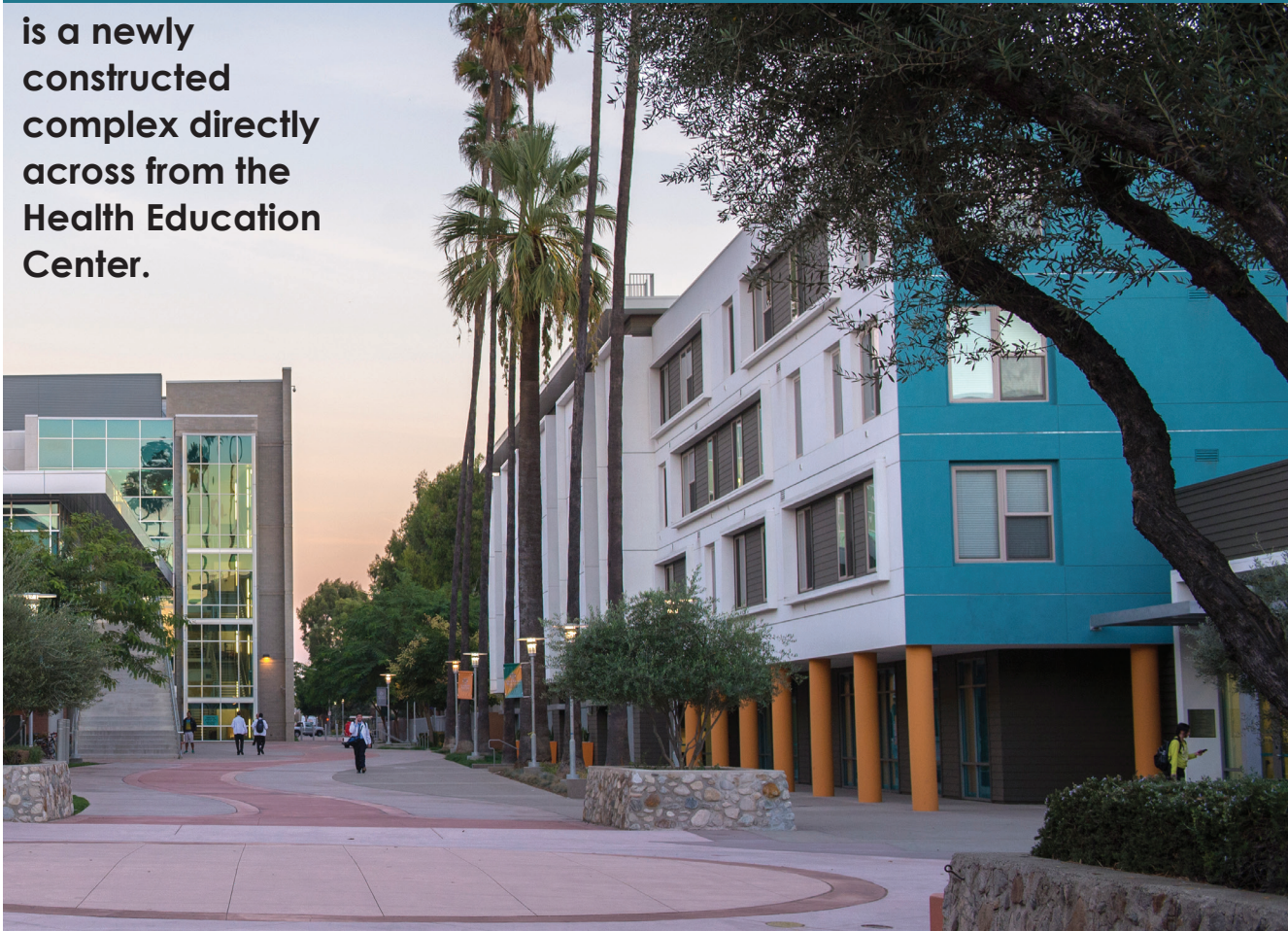
To ensure compliance with California State Health Department requirements and exhibit exemplary commitment to the rights and integrity of all parties in the education of health care professional students, WesternU/CPM has established medical status credentialing requirements that must be completed prior to matriculation. In addition to the skills listed above, candidates for the DPM degree also must be sufficiently free of any serious communicable diseases. Medical status credentialing is designed to ensure that the safety of patients is not compromised while protecting the rights and safety of students as well. For more detailed information, contact the Student/Employee Health Coordinator.



# HOUSING AND TRANSPORTATION

## THE DAUMIER

is a newly constructed complex directly across from the Health Education Center.



[westernu.edu/students/students-housing-moving/](https://westernu.edu/students/students-housing-moving/)

The parking lots are managed by the city of Pomona. You can purchase an annual parking permit during online registration or you may choose to park in metered lots.

The Metrolink train is another option for students commuting to campus. The Pomona downtown station, which is a few blocks from campus, operates on the Riverside Line, connecting downtown Riverside to Los Angeles. The Pomona North station, which is further from the school, is on the San Bernardino Line, which runs from downtown San Bernardino to Los Angeles. You can get more information at [metrolinktrains.com](https://metrolinktrains.com).



Western University  
OF HEALTH SCIENCES

College of  
Podiatric Medicine

**"What I am doing here  
is changing people's lives."**

---

**"Humanism teaches us how  
to really care for a patient.  
We learn compassion and  
a way of practicing."**

---

**"Faculty here are more like  
mentors, they really take  
an interest in you."**



PICTURE YOURSELF HERE

# CONTACTS

## ADMISSIONS OFFICE

309 E. Second Street  
Pomona, CA 91766  
(909) 469-5335

**Marie Anderson, Director of Admissions,  
International Student Advisor**  
(909) 469-5485  
manderson@westernu.edu

**Miranda Esparza, Admissions Counselor**  
(last names A-E)  
(909) 469-5290  
mesparza@westernu.edu

**Kelsey Casselle, Admissions Counselor**  
(last names F-L)  
(909) 469-5649  
kcasselle@westernu.edu

**Sarah Campos, Admissions Counselor**  
(last names M-Q)  
(909) 469-5697  
scampos@westernu.edu

**Annica Correa, Admissions Coordinator**  
(last names R-Z)  
(909) 469-5231  
acorrea@westernu.edu

## FINANCIAL AID OFFICE

(909) 469-5353  
finaid@westernu.edu

## COLLEGE OF PODIATRIC MEDICINE STUDENT SERVICES

**Kyung Brown, MA**  
Assistant Dean of Student Affairs  
(909) 706-3889  
brownk@westernu.edu



## SOCIAL MEDIA



Facebook: westernUCPM

Twitter: @WesternUCPM

Instagram: westernUCPM

You Tube: WesternU CPM Student Affairs

## ONLINE

[www.westernu.edu](http://www.westernu.edu)

[www.westernu.edu/podiatricmedicine](http://www.westernu.edu/podiatricmedicine)

[prospective.westernu.edu](http://prospective.westernu.edu)

